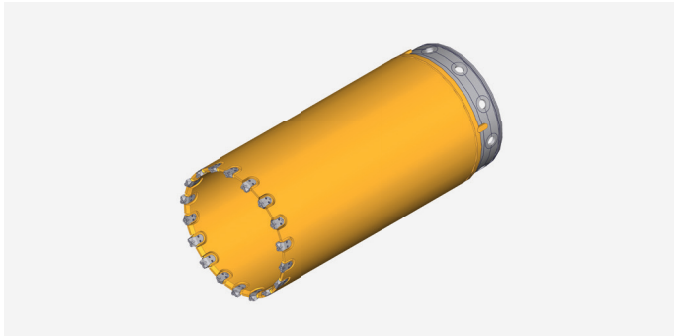


PRODUCT INFORMATION

Parts & Service



RS-WS – Casing shoe with replaceable teeth – Standard



Advantages:

- High quality and reliability
- High durability
- Utmost precision in manufacturing
- Individual application consulting
- Low-maintenance

Applications:

- Suitable for all soil layers

Features

Casing wall

- Continuous single wall
- Separately attached cutting ring
- Continuously smooth drill string > No catching of drilling tool

Thread and conical rings

- Wear-resistant steel
- Easy to replace

Modular system

- Coordination to required drilling depth possible

High manufacturing quality

- Optimal circularity
- Optimal parallel construction
- Low wear and torque requirement

Material quality

- High material standard
- Use of cast and forged parts depending on requirements

Optionally impermeable

- Thanks to optional sealing on the casing connectors
- Thanks to optional sealing on the casing screws

Feather keys

- For optimal positioning
- Easy orientation of casing screws holes
- Not for transmission of force

Bauer replaceable teeth

- Top quality and material quality
- Long service life
- Easy and fast replacement

Standard dimensions

Length (mm)	Ø (mm)											
500	620	750	880	1,000	1,180	1,200	1,300	1,500	1,800	2,000	2,200	2,500
1,000	620	750	880	1,000	1,180	1,200	1,300	1,500	1,800	2,000	2,200	2,500
2,000	620	750	880	1,000	1,180	1,200	1,300	1,500	1,800	2,000	2,200	2,500

Other lengths and diameters on request.

CONTACT:

BAUER Maschinen GmbH

Parts & Service
Product Management Drilling Tools / Kelly Bars
BAUER-Strasse 1
86529 Schrobenhausen, Germany
Phone: +49 8252 97-0
BMA-Parts-and-Service@bauer.de
www.bauer.de

Go to
Dritoc



Go to
catalog



Available
worldwide

