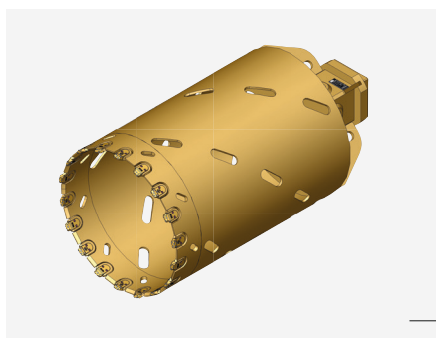


KR-WS 29 – Core barrel with replaceable teeth



Advantages:

- Designed for top drilling performance
- Particularly durable
- Innovative further development
- Individual application consulting
- Ease of maintenance

Applications:

- Preferred for coring through reinforced concrete
- Thin rock layers (< 150 MPa)
- Also suitable for boulders

Features

Material openings in the pipe

- Material flow
- Simplifies emptying of drill core

Cutting geometry

- For top performance
- Reduced wear

Ease of maintenance

- Complete cutting ring available as spare part
- Repair of replaceable teeth also possible directly on site with copier mechanism

Bauer replaceable teeth

- Top quality and material quality
- Excellent drilling progress
- Long service life

Kelly box

- Bauer Kelly box 200 mm square
- Optimized for the toughest applications

Material quality

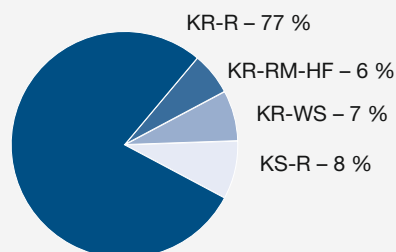
- High standard of material
- Use of cast and forged parts depending on requirements

Standard dimensions

Ø (mm)	Length (mm)
520	1,500
650	1,500
780	1,500
900	1,500
1060	1,500
1180	1,500
1350	1,500

Other lengths and diameters on request.

Top seller rock drilling



CONTACT:

BAUER Maschinen GmbH

Parts & Service
Product management drilling tools / Kelly bars
BAUER-Strasse 1
86529 Schrobenhausen, Germany
Phone: +49 8252 97-0
BMA-Parts-and-Service@bauer.de
www.bauer.de

Go to
Dritoc



Go to
catalog



Available
worldwide

