

# Attachments

## Leader and Drilling

### MC Duty-Cycle Crane

*MC Line*



# Attachments for MC Duty-Cycle Cranes

The MC duty-cycle cranes from Bauer are designed as universal equipment for the requirements of specialist foundation engineering. In order to expand the range of applications to include methods that require precise guidance of the working tool itself, Bauer offers a range of attachments that ensure this functionality for MC equipment. The attachments are perfectly adapted to the electronic and hydraulic system of the current MC range to make sure that all working functions can be operated by the standard B-Tronic interface and all required hydraulic energy is supplied by the MC base carrier.

## Leader Attachments

For the MC series, a specially adapted VTL suspended leader system was developed. Depending on the MC class, different mast profile sizes and mast lengths can be used along with adapted spotters. For the MC Crowd and winch auxiliary winch assembled leader H 96 class the H 25 leader mast profile is in use with mast lengths that vary from 32 m to 42 m (105 ft to 138 ft) and can be modified by using mast extensions accordingly. An extended version with bigger mast profile H 28 is available for use with the bigger model MC 128 with a mast length up to 48 m (157 ft).

A range of additional options are available, such as pull-down winches, auxiliary winches, drill string guidance systems and Kelly bar extensions. Thanks to clever design details, considerably greater mast lengths and working depths are achieved compared to similar equipment sizes. To increase the permitted tip load in a narrow configuration an additional boom adapter in combination with a short spotter can be used. In the result bigger drilling depth or tool diameter can be achieved.

## SRA 400 Drilling Attachment

The Super Reach Attachment SRA 400 combines the proven characteristics of Bauer drilling attachments with the flexible kinematic options of the MC duty-cycle cranes. The attachment's applications include the construction of boreholes that require a large distance from the equipment and with drilling points that are difficult to access, as well as for drilling very large diameters. Two different mast lengths are available that allow a flexible configuration by using of a mast extension. Both configurations are based either on MC 96 or on MC 128 class. With this flexible setup the SRA offers considerably larger working range coverage compared with similar solutions on the market.

In combination with specific Kelly bars, based on the Bauer Kelly bar program and different Bauer standard KDK sizes optimal drilling results can be achieved. The drilling process is assisted with standard drilling assistant systems adopted from the Bauer BG drill rigs and is operated by the B-Tronic operator interface. Easy access to KDK and guide mast is provided by using the integrated working platforms and optional stair setup.



Learn more about  
our MC 96 with SRA 400 -  
watch the video!



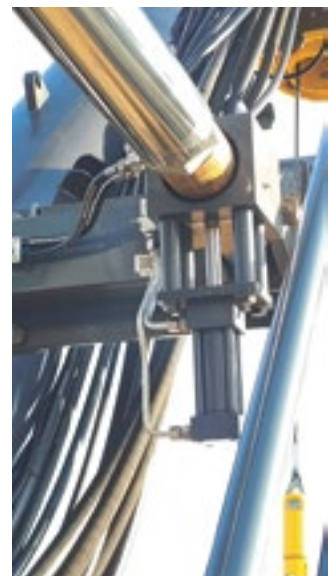
Boom head adapter leader  
H 25



Crowd and winch auxiliary  
winch assembled leader H 25

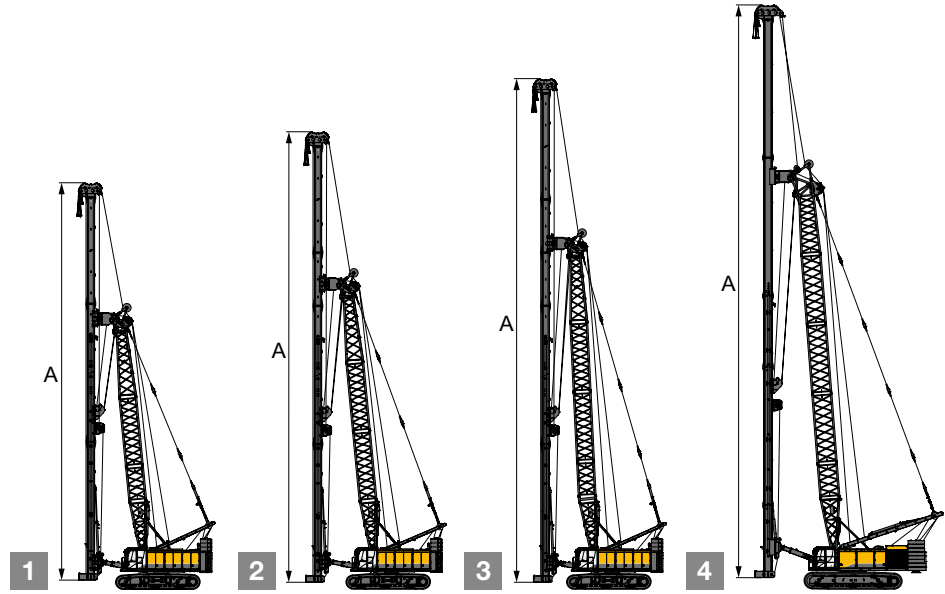


Stairs option SRA 400



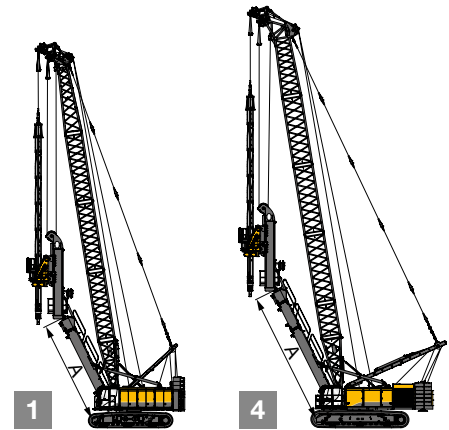
Quick coupling backstay  
cylinders

## Leader Attachments



Version	Leader	Model	Boom length*		A Leader mast length*		Drilling depth*	
			m	ft	m	ft	m	ft
1	H 25	MC 96	21.4	70	32	108	26	85
2	H 25	MC 96	24.4	80	37	123	30	100
3	H 25	MC 96	27.4	90	42	138	35	115
4	H 28	MC 128	33.4	110	48	157	39	128

## Drill Attachment Configurations



Version	Attachment	Model	A Boom length*		Working radius min.*		Working radius max.*	
			m	ft	m	ft	m	ft
1	SRA 400 w/o ext.	MC 96	30.4	100	7.9	26	11.0	36
1	SRA 400 ext.	MC 96	33.4	110	9.0	30	13.0	42
4	SRA 400 w/o ext.	MC 128	30.4	100	8.3	27	11.4	37
4	SRA 400 ext.	MC 128	33.4	110	9.4	31	13.4	44

\* Values are approximate

## Leader

The application range of the MC duty-cycle crane is greatly enhanced by its leader equipment. A wide variety of method equipment, guided by the leader mast, can be used. This expands the machine's versatility and ensures precise and efficient operation across a broad spectrum of applications.



**Impact Driving**



**FDP**  
Full Displacement Pile  
(Standard or Lost Bit)



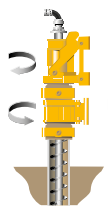
**VD**  
Vibro Displacement



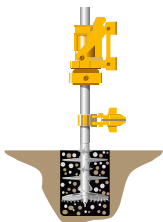
**CFA**  
Continuous  
Flight Auger



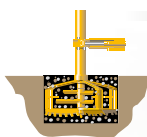
**CSM**  
Cutter-Soil-Mixing



**CCFA**  
Cased Continuous  
Flight Auger



**SCM**  
Single Column Mixing



**SCM + HD**  
Single Column Mixing





## Super Reach Attachment (SRA)

The SRA equipment extends the range of applications for duty-cycle cranes to include the Kelly drilling method. This is combined with a very large work front compared to conventional carriers as well as the option of achieving truly enormous drilling diameters. Safe and effective work on the site is ensured thanks to the most essential established Kelly drilling assistants from the Bauer portfolio.

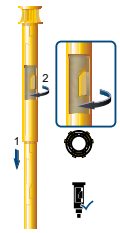


**Cased Kelly Drilling**  
Casing Installation  
with Oscillator

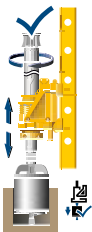


**Kelly Drilling**  
Different Drilling  
Tools, Giant Drill, etc.

## Assistance Systems



**Kelly  
Visualization**



**Kelly Drilling  
Assistant**



**Adaptive Kelly  
Speed Assistant**



# Leader Attachment

## MC 96 with Leader H 25 and CFA

### Technical data

Leader mast length, app.	42 m 138 ft
Line pull, max.	70 t 154,324 lb
Crowd force	10 t 22,046 lb
Drilling depth max., app.	35 m 115 ft
Auger	Project related
KDK	KDK 280
CFA-mode control	B-Tronic

### Main features

- Vertical movement of lead by main winch
- Hydraulic spotter controlled and actuated by MC
- Hydraulic supply of all working functions by MC
- Leader/spotter movements controlled by MC control system



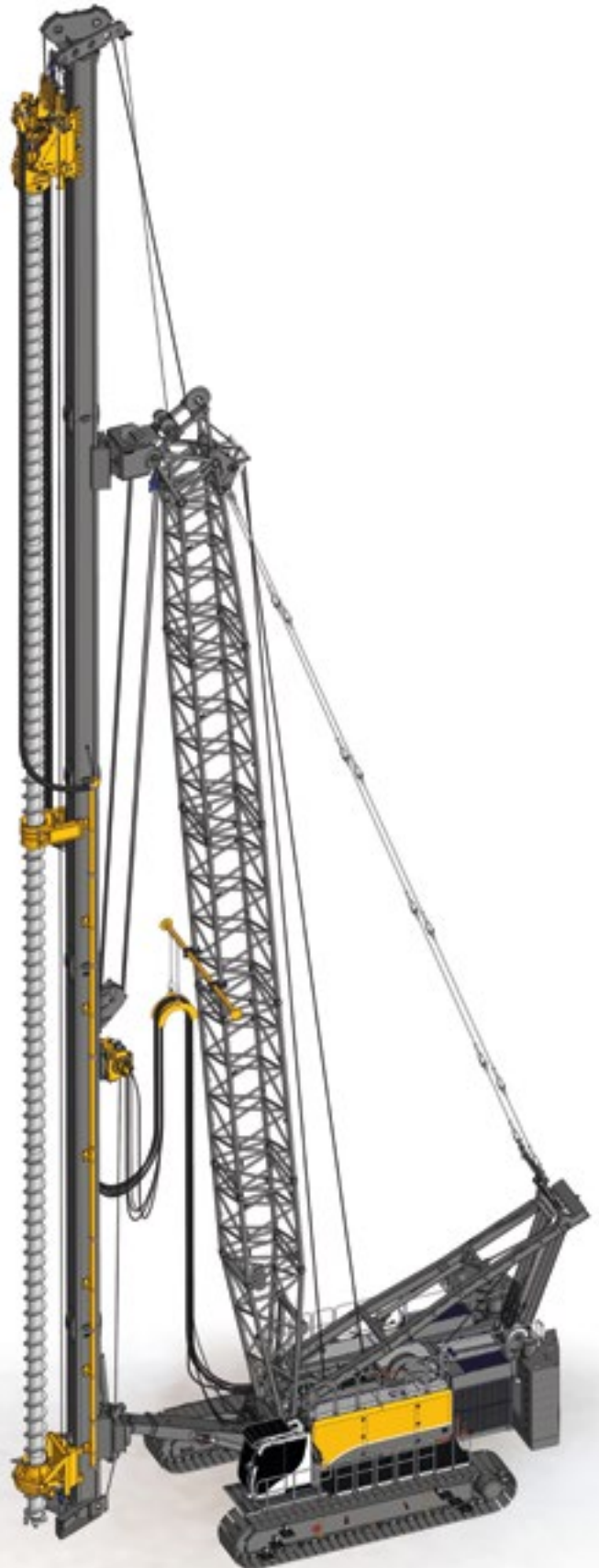
## MC 128 with Leader H 28 and CFA

### Technical data

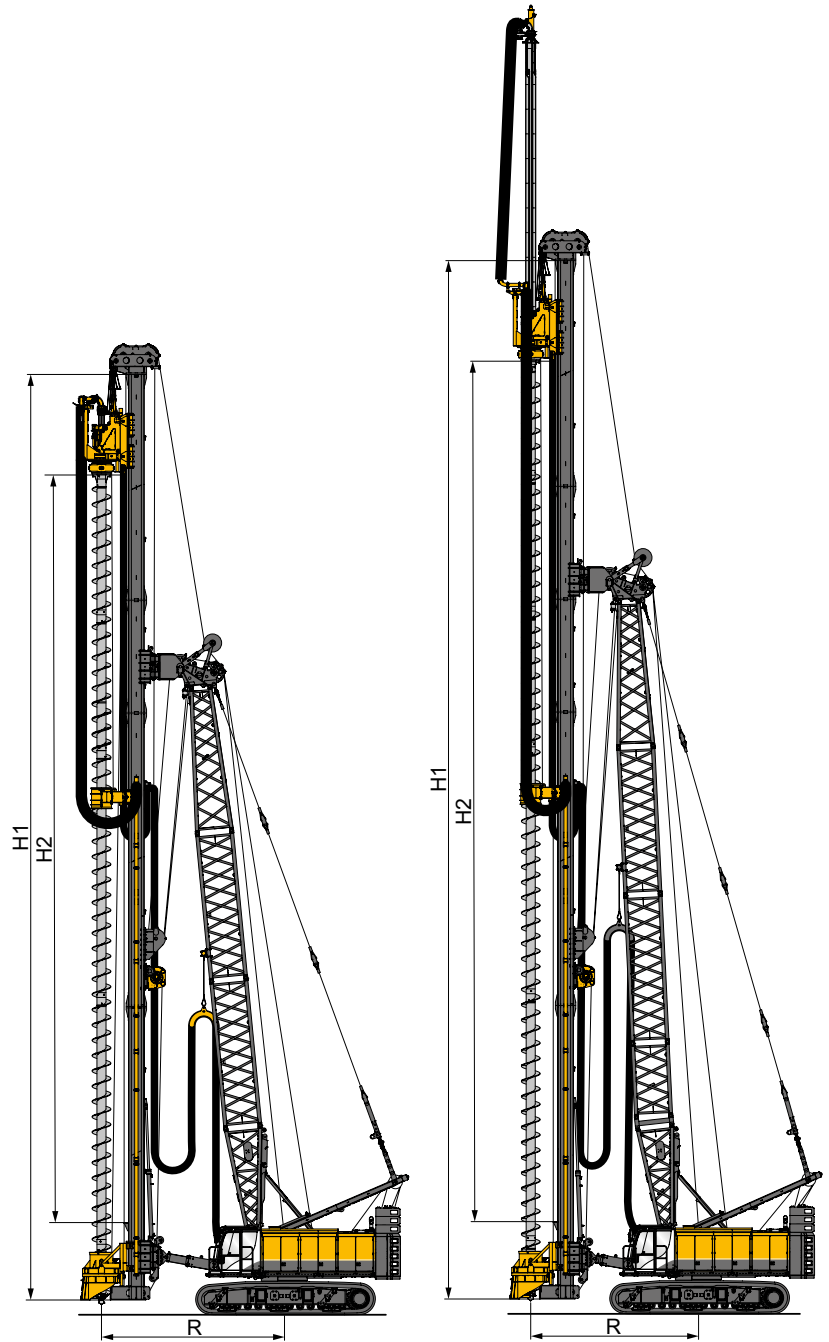
Leader mast length, app.	48 m 157 ft
Line pull, max.	70 t 154,324 lb
Crowd force	10 t 22,046 lb
Drilling depth max., app.	39 m 128 ft
Auger	Project related
KDK	KDK 300
CFA-mode control	B-Tronic

### Main features

- Vertical movement of lead by main winch
- Hydraulic spotter controlled and actuated by MC
- Hydraulic supply of all working functions by MC
- Leader/spotter movements controlled by MC control system

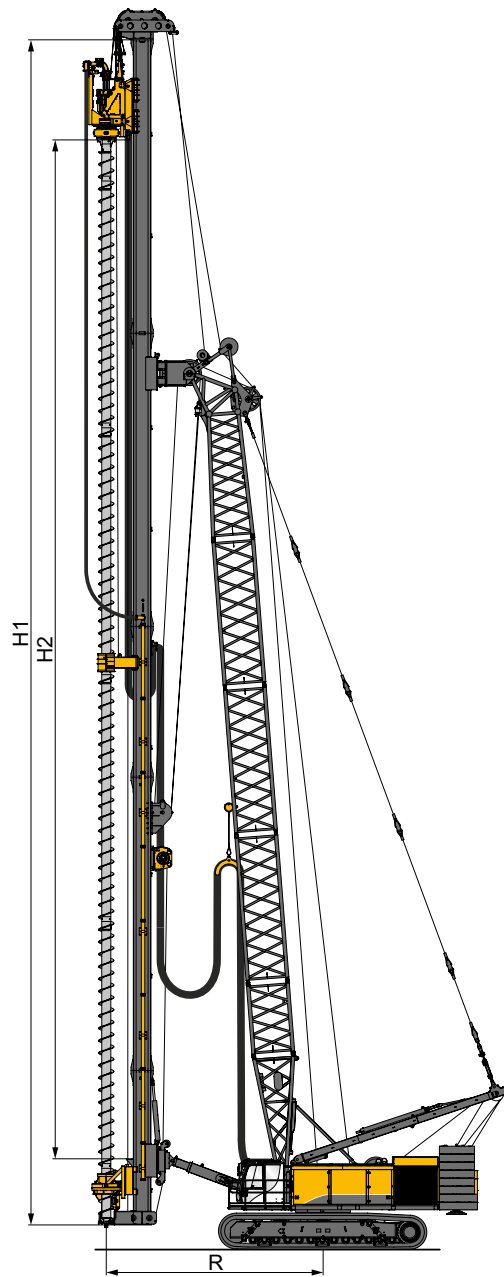


# Case Configuration with Leader Attachment



Case related data	MC 96 with leader H 25, and CFA	MC 96 with leader H 25, CFA, and extension
<b>H 1</b> Leader mast length, app.	37 m / 123 ft	42 m / 138 ft
<b>H 2</b> Drilling depth single stroke, app.	30 m / 100 ft	35 m / 115 ft
<b>R</b> Working radius, app.	7.4 m / 24 ft	6.8 m / 22 ft
Adjustment with standard spotter	+ 500 mm / + 20 in	+ 500 mm / + 20 in (with adapter)
Counterweight	45 t / 99,208 lb	45 t / 99,208 lb
Standard lattice boom length	24.4 m / 80 ft	27.4 m / 90 ft
Boom angle, max.	84.5°	88.1°
Weight of drill string, max.	11.4 t / 25,133 lb	11.4 t / 25,133 lb
Auger diameter, max.	750 mm / 30 in	750 mm / 30 in
KDK	KDK 280	KDK 280
Kelly extension	-	10.5 m / 34 ft





Case related data	MC 128 with leader H 28 and CFA
<b>H 1</b> Leader mast length, app.	48 m / 157 ft
<b>H 2</b> Drilling depth single stroke, app.	39 m / 128 ft
<b>R</b> Working radius, app. Adjustment with standard spotter	8.8 m / 29 ft + 500 mm / + 20 in
Counterweight	63.5 t / 139,994 lb
Standard lattice boom length	33.4 m / 110 ft
Boom angle, max.	86°
Weight of drill string, max.	25 t / 55,116 lb
Auger diameter, max.	1,180 mm / 46 in
KDK	KDK 300
Kelly extension	-

# Super Reach Attachment

## MC 96 with SRA 400

### Technical data

Crowd force, max.	200 kN 44,962 lbf
Line pull (winch), max.	350 kN 78,683 lbf
Stroke	2.95 m 9.67 ft
KDK	385 S
max. torque	385 kNm (420 kNm) 283,961 lbf (309,776 lbf)
max. RPM (1 <sup>st</sup> speed)	52 rpm
max. RPM (2 speed)	26 rpm
Kelly bar	BK420/470/4/48
Weight of equipment, total	30 t 66,139 lbs
Drilling depth max., app.	45.9 m 151 ft

### Technical data MC

Lattice boom length	30.4 m (100 ft) or longer
Ballast versions	45 t or 55 t + 8.5 t 99,208 lb or 121,254 lb + 18,739 lb

### Options

Other MC models	MC 86, MC 128
Drilling depth, max (with other Kelly bar)	84 m 275 ft
Stairs and working platforms	



# Case Configuration with Super Reach Attachment

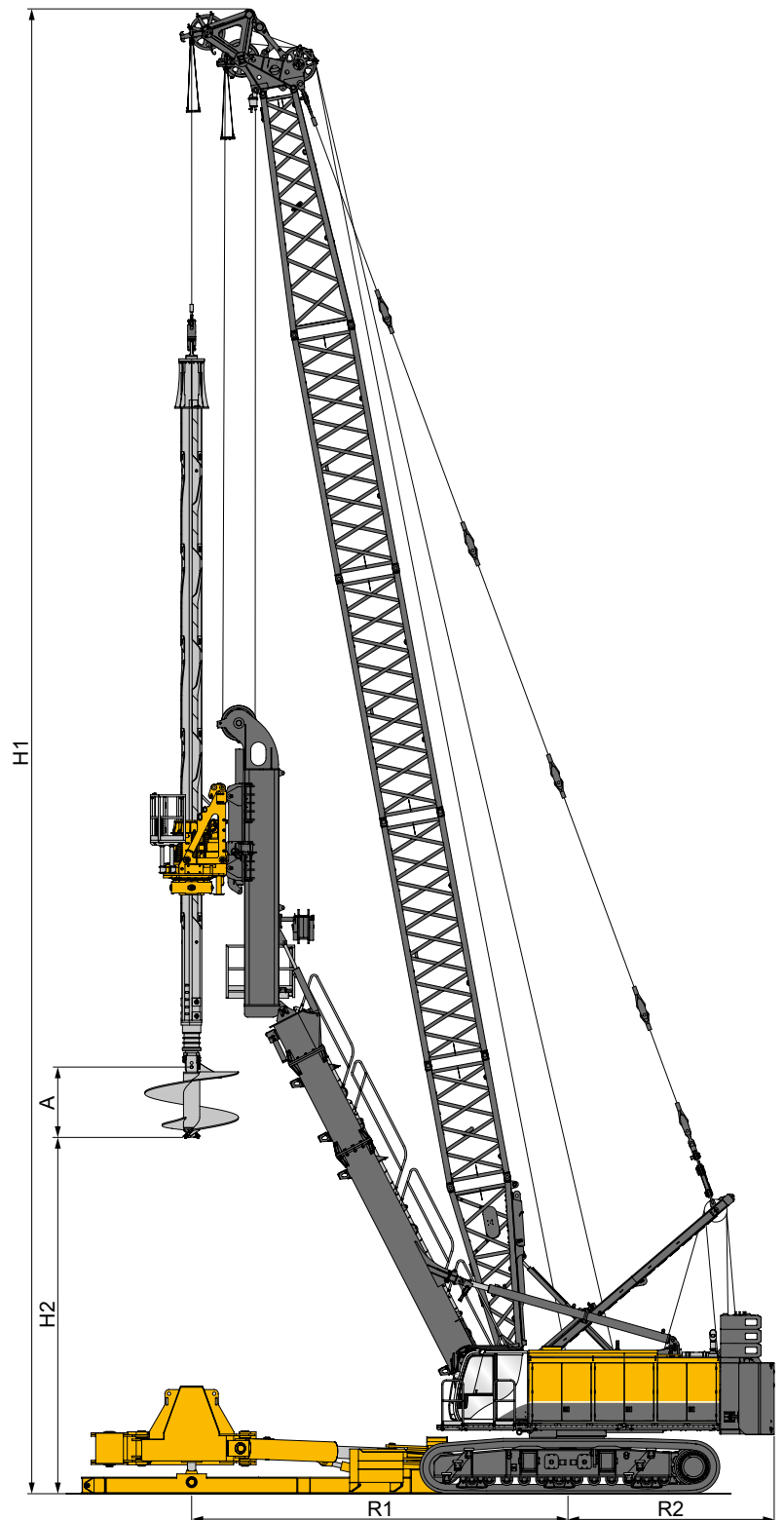
## MC 96 with SRA 400 and casing oscillator

### Technical data

<b>R</b> Working radius, app.	9.1 m 29 ft
<b>R 1</b> Swing radius, app.	5.0 m 16 ft
<b>H 1</b> Total height	35 m 118 ft
<b>H 2</b> Casing height, max.	8.6 m 28 ft
<b>A</b> Auger length	1.7 m 5 ft

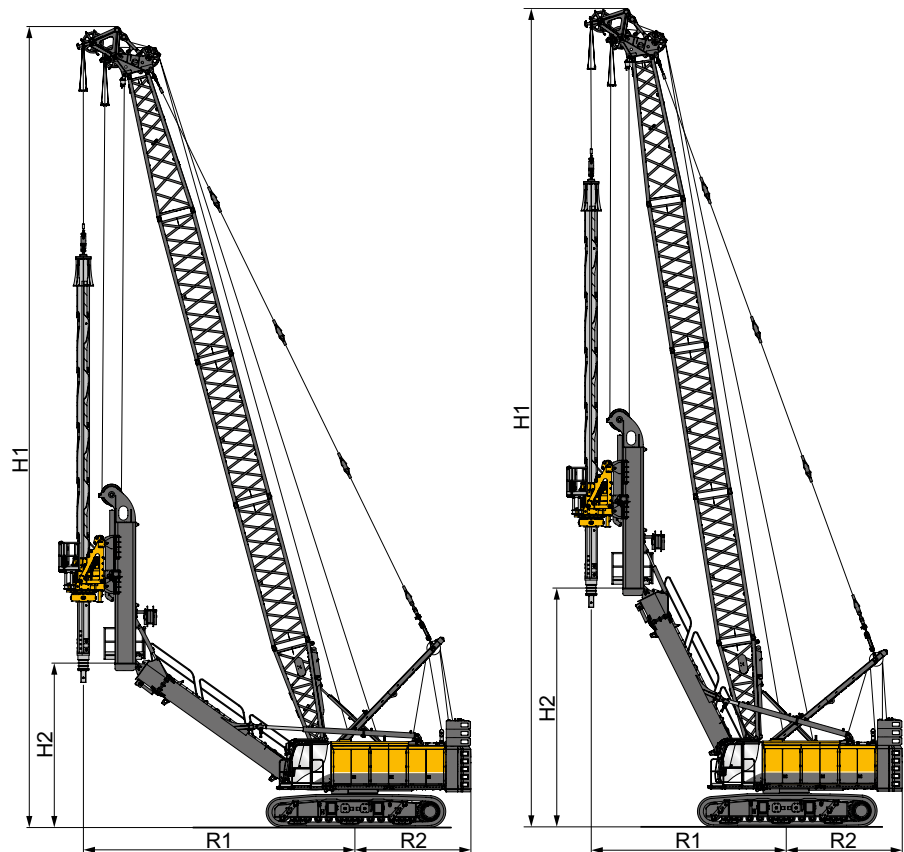
### Technical data oscillator

Casing diameter	3,000 mm 9 ft
Torque, max.	13,500 kNm 9,957,089 lbf



# Working Range of Super Reach Attachment

MC 96\* with SRA 400 without Extension



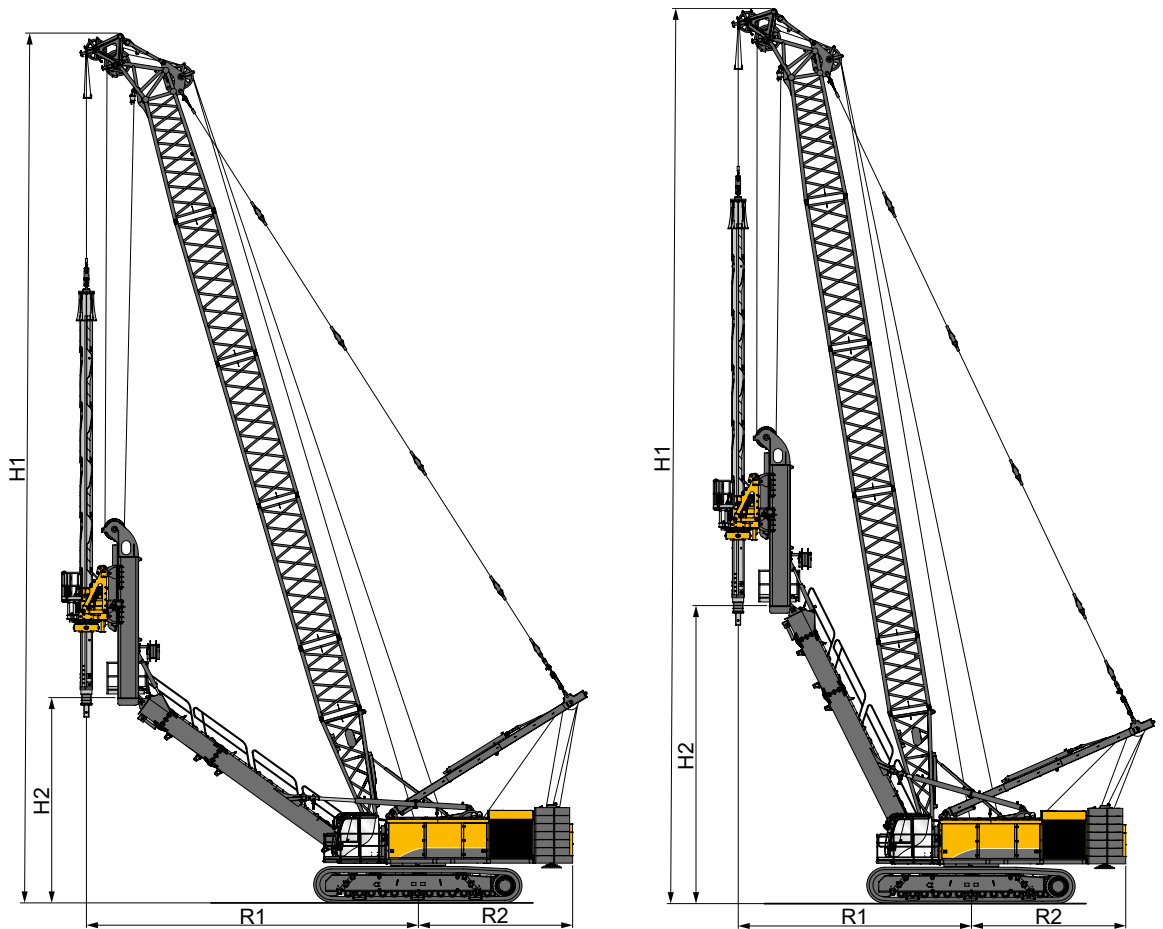
## Case related data

<b>R 1</b> Working radius, app.	max. 11.0 m / 36 ft	min. 7.9 m / 25 ft
<b>R 2</b> Swing radius	4.7 m / 15 ft	4.7 m / 15 ft
<b>H 1</b> Total height	32 m / 104 ft	33 m / 108 ft
<b>H 2</b> Clearance below Kelly	6.6 m / 21 ft	9.6 m / 31 ft
Counterweight	45 t / 99,208 lb	
Lattice boom length	30.4 m / 100 ft	

\* Base mast extension optional according to configuration



## MC 128\* with SRA 400 and Extension



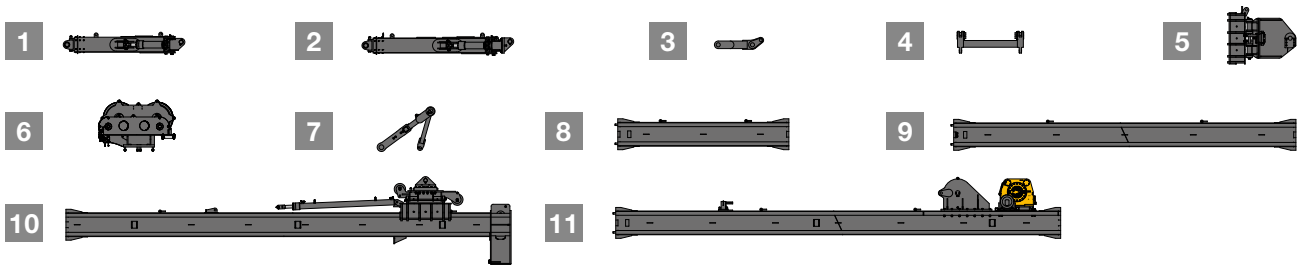
### Case related data

<b>R 1</b> Working radius, app.	max. 13.4 m / 44 ft	min. 9.4 m / 31 ft
<b>R 2</b> Swing radius	6.2 m / 20 ft	6.2 m / 20 ft
<b>H 1</b> Total height	35 m / 114 ft	36 m / 118 ft
<b>H 2</b> Clearance below Kelly	8.3 m / 27 ft	12.0 m / 39 ft
Counterweight	63.6 t / 140,214 lb	
Lattice boom length	33.4 m / 110 ft	

\* Base mast extension optional according to configuration

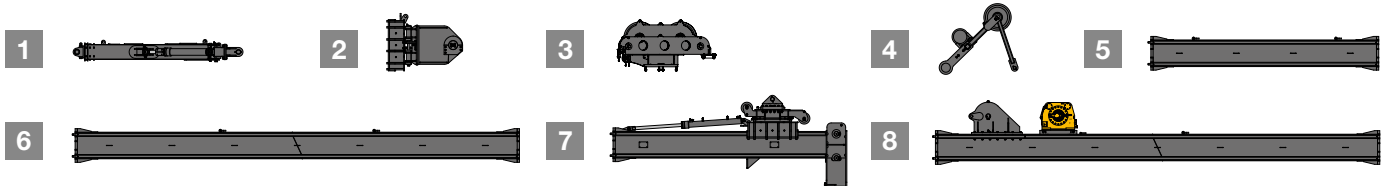
# Transport Data - Dimensions and Weights

## Leader Attachment - H 25



		Weight*		Length		Width		Height	
		kg	lb	mm	ft'/in"	mm	ft'/in"	mm	ft'/in"
1	Spotter short	2,450	5,401	3,250	10.7'	1,530	5.0'	600	24"
2	Spotter long	2,910	6,415	4,060	13.3'	1,530	5.0'	550	22"
3	Extension spotter short	300	661	1,310	52"	1,440	5"	320	13"
4	Boom adapter	650	1,433	1,780	5.8'	1,560	5.1'	580	23"
5	Boom head adapter	2,240	4,938	1,820	6.0'	1,440	57"	1,540	5.1'
6	Mast head	1,580	3,483	2,050	6.7'	1,590	5.2'	1,360	54"
7	Rooster sheave	440	970	1,620	5.3'	860	34"	1,110	44"
8	Lead section short	1,750	3,858	4,650	15.3'	570	22"	830	33"
9	Lead section long	3,070	6,768	9,220	30.2'	570	22"	830	33"
10	Lower lead section and swivel	7,710	16,997	11,890	39.0'	2,320	7.6'	2,350	7.7'
11	Mid lead section, winches and VT block	7,590	16,733	11,960	39.2'	2,160	7.1'	1,630	5.3'

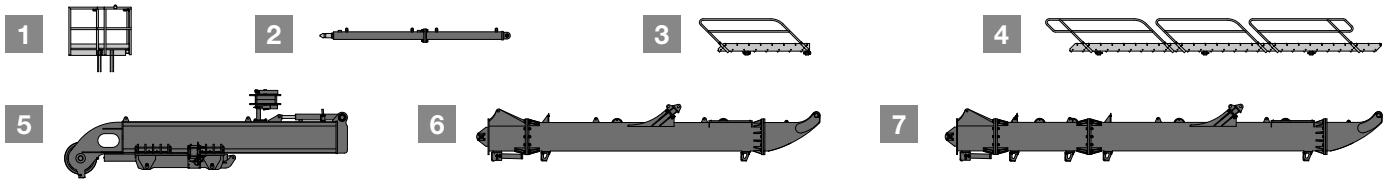
## Leader Attachment - H 28



		Weight*		Length		Width		Height	
		kg	lb	mm	ft	mm	ft'/in"	mm	ft'/in"
1	Spotter	3,200	7,055	4,540	14.9	2,360	7.7'	600	24"
2	Boom head adapter	2,800	6,173	2,030	6.7	1,280	50"	1,540	5.1'
3	Mast head	1,650	3,638	2,640	8.7	1,600	5.2'	1,360	54"
4	Rooster sheave	1,060	2,337	2,110	6.9	400	16"	1,890	6.2'
5	Lead section short	2,600	5,732	6,170	20.2	640	25"	900	35"
6	Lead section long	4,560	10,053	11,960	39.2	640	25"	900	35"
7	Lower lead section and swivel	6,160	13,580	6,330	20.8	2,030	6.7'	2,460	8.1'
8	Mid lead section, winches and VT block	6,180	13,625	11,960	39.2	1,260	50"	1,700	5.6'

\* Weights shown are approximate values; optional equipment may change the overall weight and dimensions

## Super Reach Attachment - SRA 400



		Weight*		Length		Width		Hight	
		kg	lb	mm	ft	mm	ft'/in"	mm	ft'/in"
1	Platform	590	1,301	1,660	5.4	1,870	6.1'	1,780	5.8'
2	Rear cylinder 2 x	1,220	2,690	5,300	17.4	200	8"	390	15"
3	Walkway short	400	882	2,980	9.8	2,000	6.6'	970	38"
4	Walkway long	1,030	2,271	8,980	29.5	2,000	6.6'	970	38"
5	Lead, drill sled, tilt cyl. + crowd cyl.	8,290	18,276	7,560	24.8	1,760	5.8'	2,230	7.3'
6	Mast + mast heel	5,560	12,258	9,180	30.1	2,590	8.5'	1,530	5.0'
7	Mast, mast extension + mast heel	6,930	15,278	11,690	38.4	2,590	8.5'	1,530	5.0'

\* Weights shown are approximate values; optional equipment may change the overall weight and dimensions

**International Service Hotline**

**+800 1000 1200\***

**+49 8252 97-2888**

**BMA-Service@bauer.de**

\*toll-free number, where available

**24/7**



*MC Line*



**BAUER Maschinen GmbH**  
**BAUER-Strasse 1**  
**86529 Schrobenhausen**  
**Germany**  
**Phone: +49 8252 97-0**  
**bma@bauer.de**  
**www.bauer.de**

Design developments and process improvements may require the specification and materials to be updated and changed without prior notice or liability. Illustrations may include optional equipment and not show all possible configurations. These and the technical data are provided as indicative information only, with any errors and misprints reserved.