



Press release

February 28, 2025

Contact:
Ruth Wallner
BAUER Aktiengesellschaft
BAUER-Strasse 1
86529 Schrobenhausen, Germany
Phone: +49 8252 97-1844
public.relations@bauer.de
www.bauer.de/en

Preview: Bauer at bauma 2025 – Welcome to BAUER City

Schrobenhausen / Munich, Germany – What trends are shaping the future of the construction equipment sector? What innovations are setting new standards? In April, these questions will be answered once again at bauma, the world's leading trade fair for the construction machinery industry in Munich. Since 1980, the BAUER Maschinen Group has presented high-end technology here from the world of special foundation engineering. Anyone who wants to experience the latest generation of drilling and anchor rigs, cutter and diaphragm wall equipment, pile driving or mixing technology at first hand should absolutely plan a visit to **Stand FN 519** (outdoor area north) with an area of roughly 2,750 m². At BAUER City, visitors can enjoy 18 large exhibits along with numerous smaller innovations.

BG series drilling rigs: Power meets efficiency

At bauma 2025, Bauer is presenting several powerful drilling rigs that bring together top efficiency, sustainability and flexibility: for example, the BG 55. This is the largest drilling rig at the stand, featuring impressive V-kinematics that offer a high level of rigidity for difficult applications. Equipped with a CCFA package (Cased Continuous Flight Auger) and the new BAUER Torque Multiplier (BTM), the BG 55 sets new standards for drilling depth and diameter. The BG 30 H showcases the FDP method (Full Displacement Pile), a particularly sustainable option thanks to excellent material excavation performance and low fuel consumption. Another drilling rig exhibited by Bauer highlights the fact that despite all multifunctional innovations, the standard Kelly drilling method still remains a focus in equipment design.

BCS 185 power pack: A revolution in diaphragm wall technology

Since late 2024, the BAUER BCS 185 power pack cutter system has demonstrated its performance capacity on the Grand Paris Express project. This unit is based on the established BCS 185 cutter system, yet features a modular drive concept. Instead of a permanently installed motor, an electric or diesel power pack can be used as required. Thanks to this flexibility, it is possible to operate the system either locally and emission-free with electric power, or conventionally with diesel. The diesel HD 1400 can also be equipped with a Silent Kit to reduce noise emissions, while the HE 1400 electric power pack enables a significant further reduction in noise levels. Another innovation is the variable positioning of the power pack, which can be attached on the side, rear or even apart from the machine depending on the spatial conditions. Thanks to the BCS 185 power pack, the construction of diaphragm walls has never been so sustainable.

eRG 21 T hybrid: 68% lower emissions, maximum power

A construction site nearly without noise and fumes? The eRG 21 T hybrid from RTG Rammtechnik demonstrates how it's done. The innovative drive combines the power of a

430 kW diesel engine and the precision of an electric motor with up to 88 kW of extra power (standard power supply connection: 125 A / 400 V). The unique combination of the two drives makes it possible to keep efficiency at a consistently high level despite stringent emission requirements. The diesel engine works at reduced capacity, aided by the supporting electric motor, resulting in a significant reduction in both CO₂ emissions as well as noise levels. Hybrid operation reduces fuel consumption, and thereby also CO₂ emissions, by up to 68% – impressive proof of the advantages offered by this groundbreaking drive technology. The hybrid equipment also delivers impressive versatility: With a considerable performance capacity, it can handle even the most demanding of pile driving tasks without a problem.

KLEMM anchor drilling rigs: Innovative, efficient, powerful

KLEMM Bohrtechnik is also presenting innovative drilling rigs at bauma, including compact models with variable kinematics systems, powerful anchor drilling rigs and energy-efficient geothermal drilling rigs. For instance, the newly developed KR 717-3GW features a motor capacity of more than 250 kW and is designed for drilling depths of greater than 400 m. The functionalities are extended through a newly developed clamping and breaking device as well as a patented, lateral sliding double-head drilling system. Other highlights from KLEMM include the KR 806-4GM with power-sharing system to reduce fuel consumption and the KR 805-3GW for geothermal drilling at depths of greater than 300 m. All rigs are characterized by high efficiency, modern control systems and powerful technology.

MSM system: Revolutionizing soil mixing

The Multi Shaft Mixing System (MSM) from RTG Rammtechnik GmbH sets new standards in special foundation engineering. With four independent rotary drives and parallel mixing paddles, the system offers more flexibility than conventional triple drives. Continuous feeding in of cement slurry ensures fast and efficient soil mixing. The MSM system has versatile applications, for example in the construction of cut-off walls, groundwater barriers, dike rehabilitation and excavation pits.

New sheet pile press from RTG: Continuously adjustable, fast, powerful

Trade fair visitors should also make sure not to miss the new sheet pile press from RTG, which is exhibited on an RG 19 T at the stand of terra infrastructure (FN 720/2). This enables the continuously adjustable use of Z profiles (700 to 800 mm) and rapid hydraulic fine-tuning of the clamping jaws. An increased volumetric flow ensures high pressing speeds of up to 9.4 m/min during extension and 12.0 m/min during retraction. Innovative automated pressing systems and attachment assistants allow for optimized operation.

MAT innovations: Mixing, separating, pumping

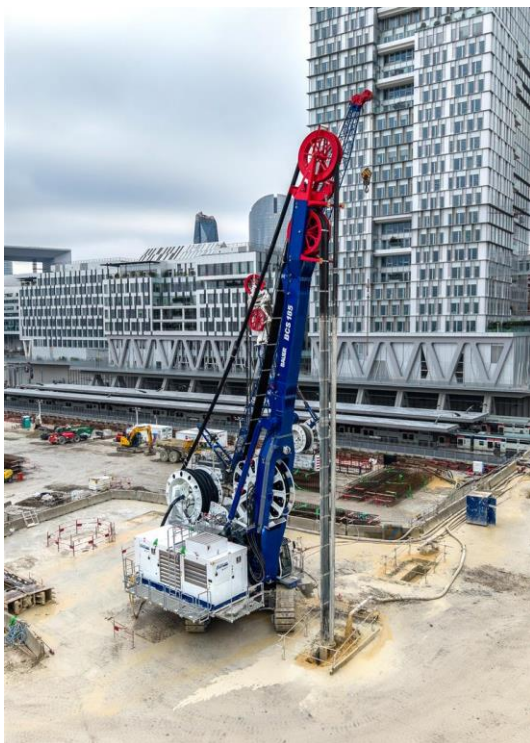
BAUER MAT Slurry Handling Systems is also presenting exciting exhibits once again: For instance, the new CMS 50 mixer – the successor model to the successful CMS 45 – delivers 10% enhanced performance, a more precise, intelligent and self-learning control system for exact dosing. A completely new development, the electric and fully automated IPA 250 grouting station features an impressive pumping rate of 250 l/min and the latest technology. New arrivals in the area of separation technology include the BD 30-C decanter centrifuge with a max. capacity of 30 m³/h and the compact BE 100 desanding plant for geothermal projects.

And last but not least: EURODRILL GmbH, the BAUER Maschinen Group's specialist for hydraulically operated rotary heads and impact drill hammers, is presenting its products at stand FN 523/6.

Images: pressebild-press-image-bauma-munich-2025-preview-bauer-maschinen...



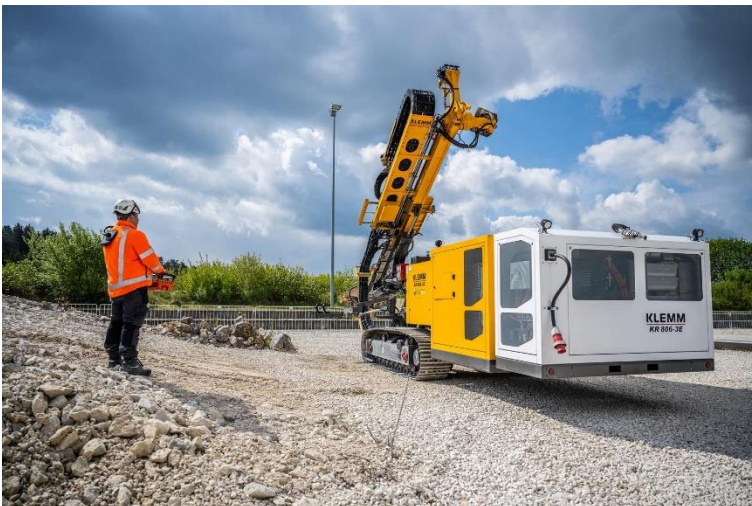
(1) BAUER BG 36 with CCFA package



(2) Modular drive concept: The new BAUER BCS 185 power pack cutter system can be operated either with a diesel or electric power pack as required.



(3) Hybrid operation of the eRG 21 T hybrid reduces fuel consumption, and thereby also CO₂ emissions, by up to 68%.



(4) Visitors to the Bauer stand can experience the successor model of the electric-hydraulic KLEMM KR 806-3E (pictured in image).

All images: © BAUER Group

About BAUER Maschinen Group

For almost 60 years, equipment from Bauer has represented the highest performance and quality and constant innovation. The BAUER Maschinen Group is the world market leader in the development and manufacture of specialist foundation engineering equipment. BAUER Maschinen GmbH, which is also the holding company for a number of subsidiaries, designs and builds large-diameter drilling rigs, duty-cycle cranes, trench cutters, grabs and vibrators as well as the related tooling at its plants in Schrobenhausen, Aresing and Edelshausen. The subsidiaries manufacture state-of-the-art mixing and separation equipment as well as rotary drive systems and equipment for drilling small-diameter boreholes and wells. The BAUER Maschinen Group also operates manufacturing facilities in the USA, China, Malaysia, Italy, Singapore and Turkey. A component supplier within the Group is Schachtbau Nordhausen. The company operates a global sales and service network. More at <https://equipment.bauer.de/en>.



About Bauer

The BAUER Group is a leading provider of services, equipment and products dealing with ground and groundwater. The Group can rely on a worldwide network on all continents. The Group's operations are divided into three forward-looking segments with high synergy potential: Geotechnical Solutions, Equipment and Resources. Bauer profits enormously from the collaboration of its three business segments, enabling the Group to position itself as an innovative, highly specialized provider of products and services for demanding projects in specialist foundation engineering and related markets. Bauer therefore offers suitable solutions to the world's greatest challenges, such as urbanization, the growing infrastructure needs, the environment, as well as water. The BAUER Group was founded in 1790 and is based in Schrobenhausen, Bavaria. In 2023, it employed about 12,000 people and achieved total Group revenues of EUR 1.8 billion worldwide. More information can be found at <https://www.bauer.de/en>. Follow us on [Facebook](#), [LinkedIn](#), [Instagram](#) and [YouTube](#)!