

# CBC 45

## Silent Cutter

*BC System*



# Technical Specifications

The CBC 45 “Silent Cutter” is a further improvement of former CBC Systems. One of the characteristic features is the low noise emission of the hydraulic power pack HD 1400. This base carrier is especially developed for confined jobsite conditions. The CBC 45 uses a Bauer standard HDS system for up to 120 m working depth and can be equipped with the established Bauer trench cutters BC 35 and BC 40.

<b>Base Carrier</b>	<b>MT 160</b>	
Crawler type	UW 130 E (B8B)	
Gauge width	2,700 – 4,000 mm	
Crawler width	3,700 – 5,000 mm	
Track shoes	1,000 mm	
<b>Hydraulic Power Pack</b>	<b>HD 1400</b>	
Engine power (Tier 2)	570 kW at 1,800 rpm	
Engine power (Tier 4 final)	563 kW at 1,800 rpm	
Sound power level $L_{WA}$	110 dB (A)	
<b>Hose Drum System</b>	<b>HDS 120</b>	
Panel depth	max. 120 m	
Max. cutter weight	45 t	
Max. recovery load	600 kN	
<b>Cutter</b>	<b>BC 35</b>	<b>BC 40</b>
Cutter gear boxes	2 x BCF 9	2 x BCF 10
Torque	2 x 91 kNm	2 x 100 kNm
Panel width	640 – 1,500 mm	800 – 1,800 mm
Panel length	2,800 mm / 3,200 mm	
<b>Overall height</b>	18.0 m	
<b>Overall width</b>	6.7 m	
<b>Total weight – approx.</b>	165 t	

## Spotlights



Twin-seated cabin

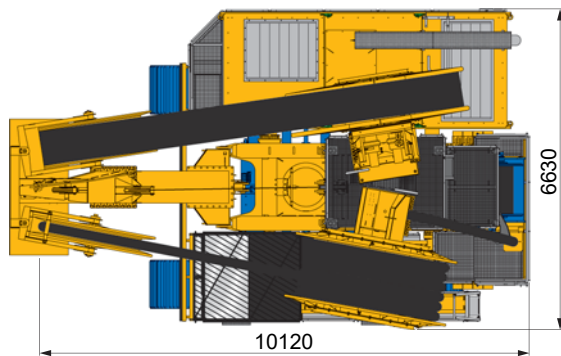
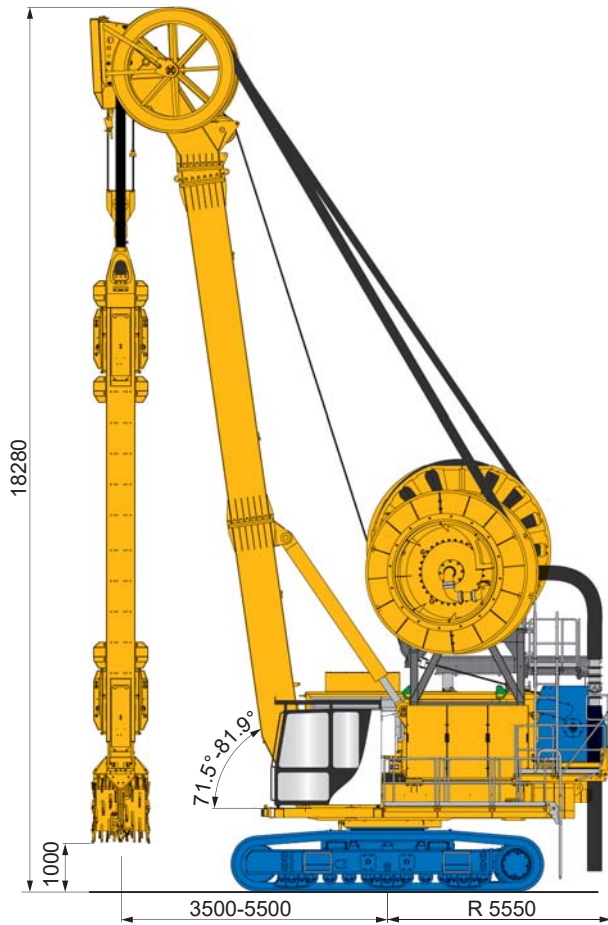


Foldable / flexible walkways



# Dimensions

## Working



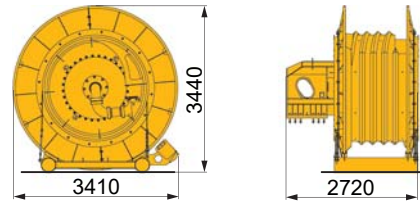
**G** = Weight  
**B** = Width, overall

Weights shown are approximate values;  
optional equipment may change the overall  
weight and dimensions.

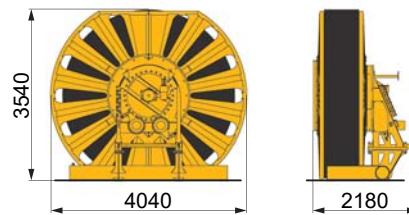
Walkways in retracted position.

## Transport

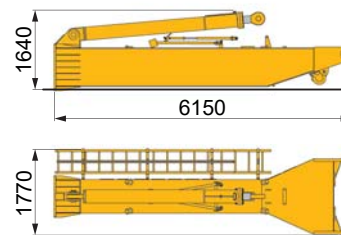
**G = 7.5 t without hoses**



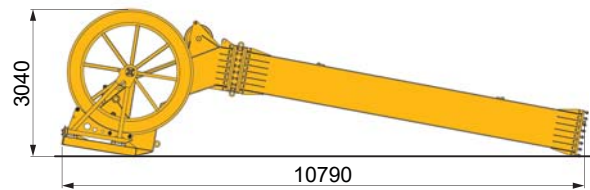
**G = 11.0 t incl. hose band**



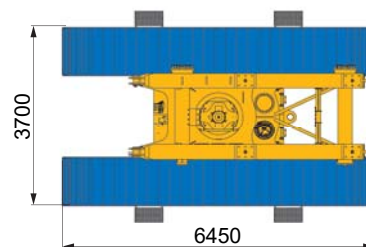
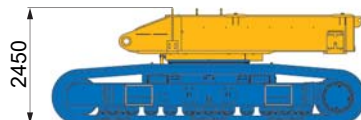
**G = 3.7 t**



**G = 8.6 t B = 2,550 mm**



**G = 49.0 t**







**BAUER Maschinen GmbH**  
**BAUER-Strasse 1**  
**86529 Schrobenhausen**  
**Germany**  
**Tel. +49 8252 97-0**  
**bma@bauer.de**  
**www.bauer.de**

Design developments and process improvements may require the specification and materials to be updated and changed without prior notice or liability. Illustrations may include optional equipment and not show all possible configurations. These and the technical data are provided as indicative information only, with any errors and misprints reserved.