

# Specialist Press Release

December 8, 2021

Contact:  
Wiebke Foellmer  
BAUER Aktiengesellschaft  
BAUER-Strasse 1  
86529 Schrobenhausen, Germany  
Phone +49 8252 97-3843  
[public.relations@bauer.de](mailto:public.relations@bauer.de)  
[www.bauer.de](http://www.bauer.de)

## **Bauer Spezialtiefbau constructs excavation pit for office building in Munich**

**Munich, Germany** – In the Parkstadt Schwabing neighborhood in the north of Munich, a new office building is currently being constructed on a 13,000 m<sup>2</sup> site. For the project “Parkstadt Schwabing, MK3, Office Building Construction”, BAUER Spezialtiefbau GmbH was commissioned by ARGENTA Internationale Anlagegesellschaft & Co. Grundbesitzgesellschaft OHG with the construction of the excavation pit including dewatering.

For the 9 m deep excavation pit, Bauer is constructing a 6,000 m<sup>2</sup> single-anchored mixed-in-place cut-off wall (MIP) with a thickness of 550 mm and embedded double U king piles up to a depth of 17 m. Moreover, 750 m<sup>2</sup> of sheet pile wall are being installed with a maximum depth of 16 m for dewatering. After sufficient uplift prevention has been achieved for the structure, the sheet pile wall will then be pulled out again. In addition, 3,000 running meters of anchors are being installed.

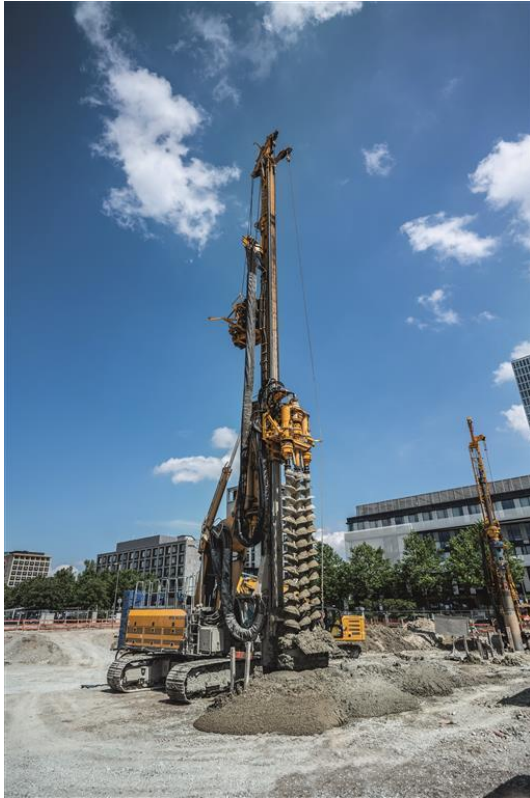
Due to impermeable tertiary layers in the area of the excavation base, depth drainage was used. This requires high logistics efforts and precise coordination with earthworks. Due to large soakaways in the public ground, it is also necessary to pivot the anchor in the MIP wall and increase the anchor distances, which means that staggered anchors with a load of up to 1,800 KN are being used.

Because the level of the impermeable tertiary layer fluctuates widely throughout the site, the retaining wall is also being constructed with a final depth that varies by up to 5 m. “With our MIP method, we are able to vary the drilling depth as needed or adapt to the soil conditions. This offers us a major advantage compared to sheet pile walls, which were originally planned, since the lengths of the sheet pile wall have to be defined and ordered in advance,” explains Bauer Project Manager Michael Doll.

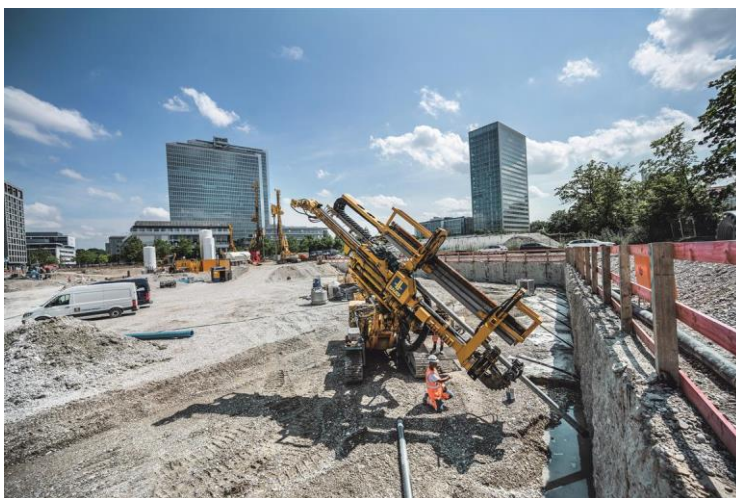
An RG 27 and an RG 19 pile driver from RTG Rammtechnik GmbH are being used, respectively, for the construction of the MIP wall and the sheet pile walls, and a KLEMM KR 806 rig is executing the anchor work.

Bauer started works in May this year. The dewatering system and dismantling of the anchors and sheet pile walls is expected to be completed by early 2022. The completion of the office building is planned for 2024.

Bilder: 2021-12\_BAUER\_Parkstadt+Schwabing+Munich ...



(1) For the 9 m deep excavation pit, Bauer is constructing a 6,000 m<sup>2</sup> single-anchored mixed-in-place cut-off wall.



(2) A KLEMM KR 806 is being used for the installation of 3,000 running meters of anchor.

All images: © BAUER Group

### **About BAUER Spezialtiefbau Group**

BAUER Spezialtiefbau GmbH, the original parent company of the BAUER Group, has been a major driving force in the development of specialist foundation engineering. It carries out all of the customary processes of foundation engineering, primarily for excavation pits, foundations, cut-off walls and ground improvements on a worldwide basis. In doing so, BAUER Spezialtiefbau GmbH works closely together with their over 50 subsidiaries and branches across the globe. Regional networks around the world allow for the quick and flexible application of machines, teams and expertise. Bauer Spezialtiefbau offers their customers individual, creative and economical specialist foundation engineering solutions for demanding construction projects, from planning through to execution. More at [bst.bauer.de](http://bst.bauer.de)

### **About Bauer**

The BAUER Group is a leading provider of services, equipment and products dealing with ground and groundwater. With over 110 subsidiaries, Bauer can rely on a worldwide network on all continents. The Group's operations are divided into three forward-looking segments with high synergy potential: Construction, Equipment and Resources. Bauer profits enormously from the collaboration of its three business segments, enabling the Group to position itself as an innovative, highly specialized provider of products and services for demanding projects in specialist foundation engineering and related markets. Bauer therefore offers suitable solutions to the world's greatest challenges, such as urbanization, the growing infrastructure needs, the environment, as well as water, oil and gas. The BAUER Group was founded in 1790 and is based in Schrobenhausen, Bavaria. In 2020, it employed about 11,000 people in around 70 countries and achieved total Group revenues of EUR 1.5 billion. BAUER Aktiengesellschaft is listed in the Prime Standard of the German Stock Exchange. More information can be found at [www.bauer.de](http://www.bauer.de). Follow us on [Facebook](#), [LinkedIn](#) and [YouTube](#)!